

CLARINETTO JAZZ

ESAME DI AMMISSIONE

- 1) esecuzione di:
 - a) una scala maggiore C, F e G secondo lo schema allegato
 - b) accordi scala maggiore C, F e G secondo lo schema allegato
- 2) esecuzione tema-solo improvvisato-tema, con accompagnamento base iReal o Aebersold, di un brano, scelto dalla commissione, tratto dal seguente elenco:
 - 1 Autumn Leaves (J. Kosma)
 - 2 Birk's Works (D. Gillespie)
 - 3 Blue Bossa (K. Dorham)
 - 4 Blue Seven (S. Rollins)
 - 5 Take The A Train (B. Strayhorn)
- 3) Lettura a prima vista di una facile melodia jazz

PROGRAMMA DI STUDI

Sviluppo della tecnica e delle qualità espressive sullo strumento:

- studi di agilità
- studi tecnici
- studi ritmici
- studi melodici
- studio della scala maggiore
- studio degli accordi costruiti sulla scala maggiore
- studio della scala minore melodica
- studio degli accordi costruiti sulla scala minore melodica
- studio brani del repertorio jazzistico

Testi di riferimento:

Joseph Viola – Technique of the saxophone 1 - Scale Studies
Joseph Viola – Technique of the saxophone 2 - Chord Studies
Joseph Viola – Technique of the saxophone 3 - Rhythm Studies
Lennie Niehaus – Jazz improvisation for saxophone
Lennie Niehaus – Jazz conception for saxophone 4 – sax duets

CRITERI PER LA VALUTAZIONE FINALE

Lo studente, al termine del Corso Propedeutico, dovrà dimostrare di possedere una preparazione tecnica e una maturità musicale tale da affrontare con sicurezza l'esame di ammissione al Triennio Accademico di I livello in Saxofono jazz.

Clarinetto Bb

Scala maggiore

Stefano D'Anna

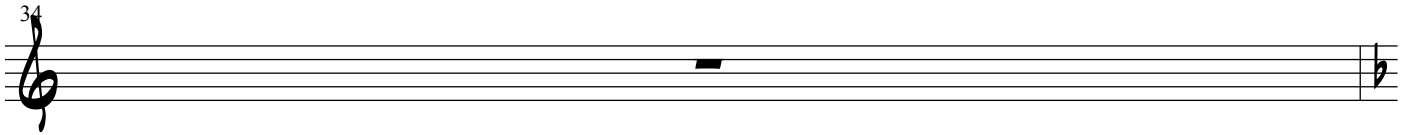
1 - C

Musical score for Clarinet Bb, Major Scale (1-C). The score consists of seven staves of music in treble clef, 2/4 time signature. The first staff starts with a box containing '1 - C'. The music is a scale exercise starting on middle C (C4) and ascending to G5, then descending back to C4. The notes are: C4, D4, E4, F4, G4, A4, B4, C5, B4, A4, G4, F4, E4, D4, C4. The score is divided into measures of 4, 4, 4, 4, 4, 4, and 4 measures respectively.

29

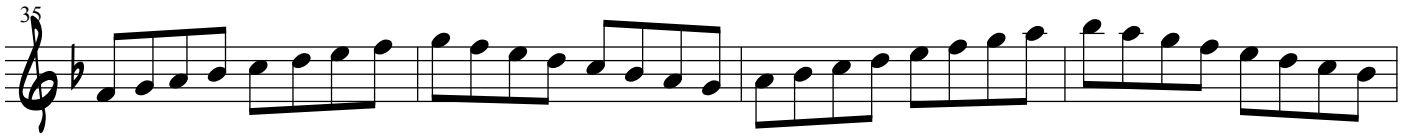


34

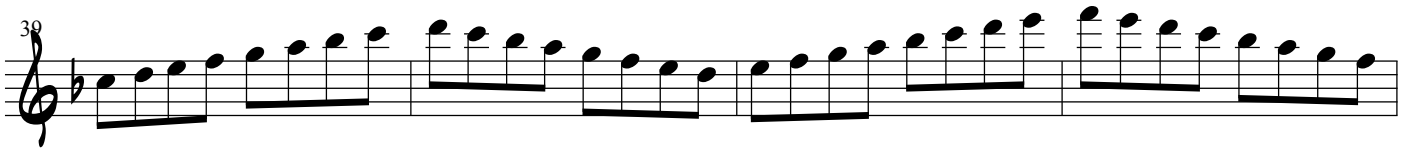


2 - F

35



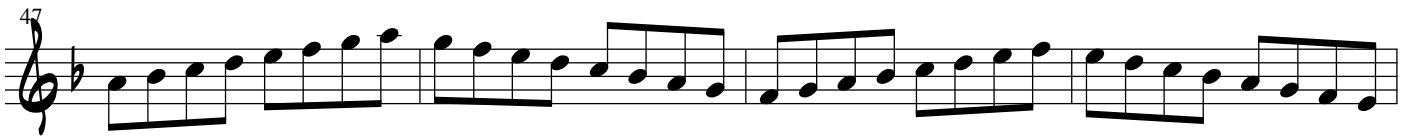
39



43



47



51



55



59



Scala Maggiore

63

68

3 - G

69

73

77

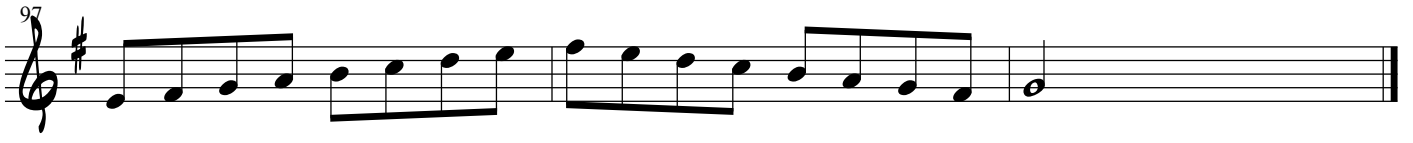
81

85

89

93

Scala Maggiore



Accordi Scala Maggiore

(C)



1 C Δ Dm7 Em7 F Δ G7 Am7 B \emptyset C Δ

A musical staff in treble clef showing the C major scale with chords indicated above the notes: C Δ (C4), Dm7 (D4, F4, A3), Em7 (E4, G4, B3, D4), F Δ (F4), G7 (G4, B4, D5, F5), Am7 (A4, C5, E5, G5), B \emptyset (B4), and C Δ (C5).

2

A musical staff in treble clef showing the C major scale with chords indicated above the notes: C Δ (C4), Dm7 (D4, F4, A3), Em7 (E4, G4, B3, D4), F Δ (F4), G7 (G4, B4, D5, F5), Am7 (A4, C5, E5, G5), B \emptyset (B4), and C Δ (C5).

A musical staff in treble clef showing the C major scale with chords indicated above the notes: C Δ (C4), Dm7 (D4, F4, A3), Em7 (E4, G4, B3, D4), F Δ (F4), G7 (G4, B4, D5, F5), Am7 (A4, C5, E5, G5), B \emptyset (B4), and C Δ (C5).

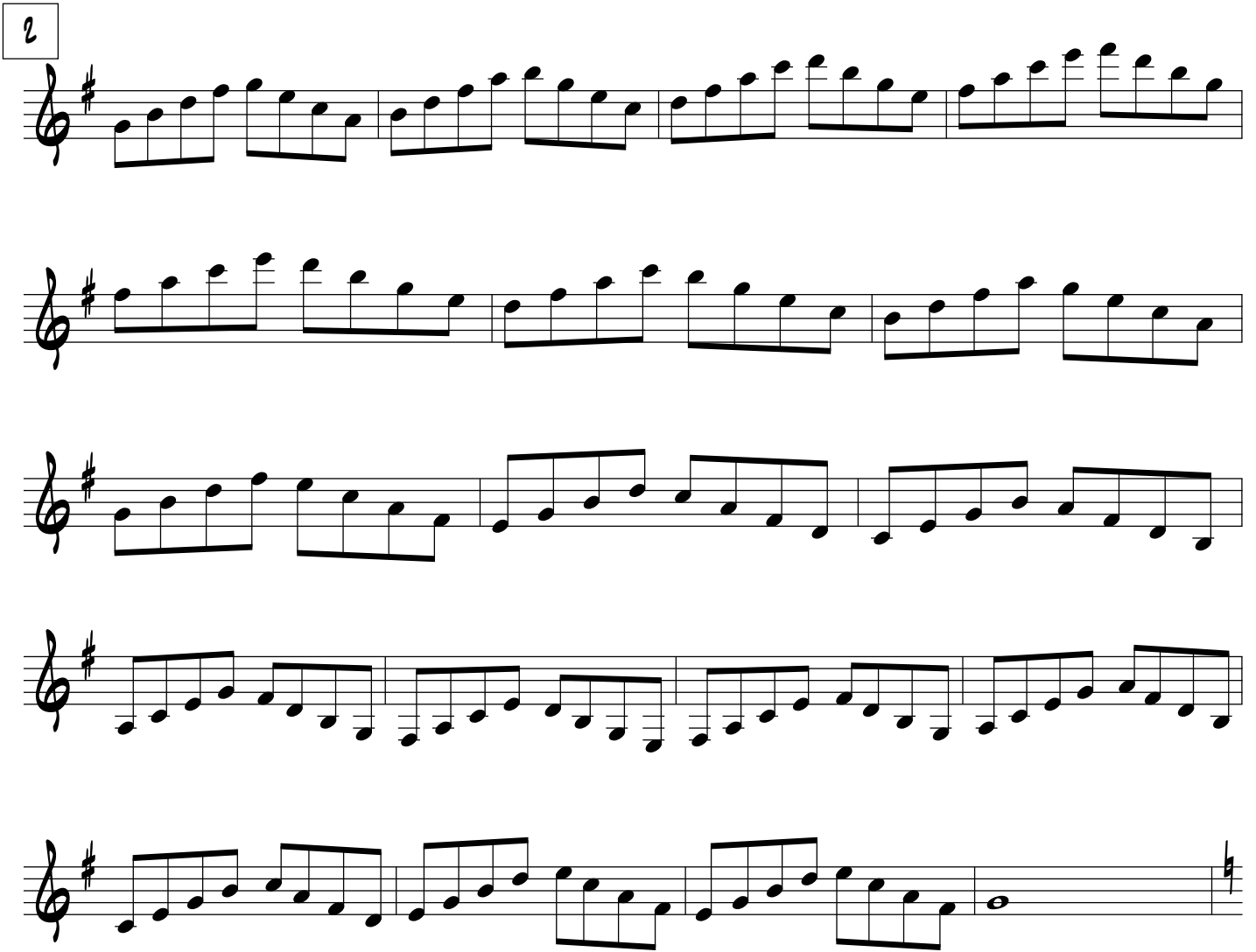
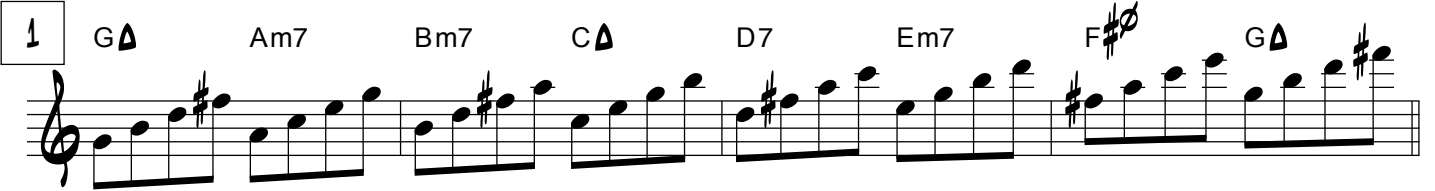
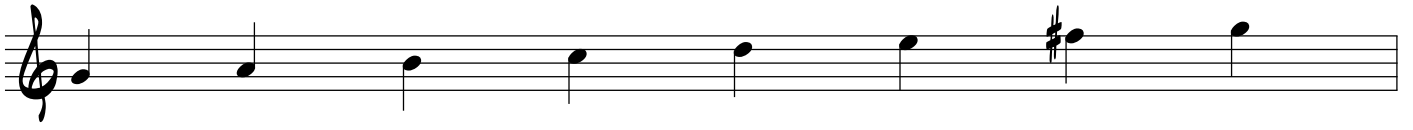
A musical staff in treble clef showing the C major scale with chords indicated above the notes: C Δ (C4), Dm7 (D4, F4, A3), Em7 (E4, G4, B3, D4), F Δ (F4), G7 (G4, B4, D5, F5), Am7 (A4, C5, E5, G5), B \emptyset (B4), and C Δ (C5).

A musical staff in treble clef showing the C major scale with chords indicated above the notes: C Δ (C4), Dm7 (D4, F4, A3), Em7 (E4, G4, B3, D4), F Δ (F4), G7 (G4, B4, D5, F5), Am7 (A4, C5, E5, G5), B \emptyset (B4), and C Δ (C5).

A musical staff in treble clef showing the C major scale with chords indicated above the notes: C Δ (C4), Dm7 (D4, F4, A3), Em7 (E4, G4, B3, D4), F Δ (F4), G7 (G4, B4, D5, F5), Am7 (A4, C5, E5, G5), B \emptyset (B4), and C Δ (C5).

G

Accordi Scala Maggiore



Accordi Scala Maggiore

F



1

F Δ Gm7 Am7 B \flat Δ C7 Dm7 E \emptyset F Δ

2