

# Accordi Scala Maggiore

(C)



1 C $\Delta$  Dm7 Em7 F $\Delta$  G7 Am7 B $\emptyset$  C $\Delta$

A musical staff in treble clef showing the first part of the exercise. Above the staff, the chords C $\Delta$ , Dm7, Em7, F $\Delta$ , G7, Am7, B $\emptyset$ , and C $\Delta$  are written. The notes of the C major scale are written below the staff, with each note aligned with its corresponding chord above it.

2

A musical staff in treble clef showing the second part of the exercise. The notes of the C major scale are written in a sequence of eighth notes, starting with C and ending with C.

A musical staff in treble clef showing the third part of the exercise. The notes of the C major scale are written in a sequence of eighth notes, starting with C and ending with C.

A musical staff in treble clef showing the fourth part of the exercise. The notes of the C major scale are written in a sequence of eighth notes, starting with C and ending with C.

# Accordi Scala Maggiore

3

Exercise 3 consists of four staves of music. The first two staves show a melodic line with eighth notes, and the third staff shows a bass line with eighth notes. The fourth staff shows a final measure with a whole note G.

G

Exercise 3 continues with a single staff showing a melodic line with eighth notes, ending on a whole note G.

1

Exercise 1 consists of a single staff of music with eight measures. Above the staff, the following chords are indicated: GΔ, Am7, Bm7, CΔ, D7, Em7, F#Δ, and GΔ. The melody consists of eighth notes.

2

Exercise 2 consists of four staves of music. The first two staves show a melodic line with eighth notes, and the third and fourth staves show a bass line with eighth notes. The key signature has one sharp (F#).

3

Accordi Scala Maggiore

The first system consists of three staves of music in G major. The top two staves show the ascending and descending scales in eighth notes. The bottom staff shows the scale in quarter notes, ending with a whole rest.

F

The second system shows the F major scale in a single staff, starting with a treble clef and a key signature of one flat (Bb). The scale is written in quarter notes.

1

F $\Delta$  Gm7 Am7 B $\flat$  $\Delta$  C7 Dm7 E $\emptyset$  F $\Delta$

The first staff of the second system shows the F major scale in eighth notes. Above the staff, the following chord symbols are written: F $\Delta$ , Gm7, Am7, B $\flat$  $\Delta$ , C7, Dm7, E $\emptyset$ , and F $\Delta$ .

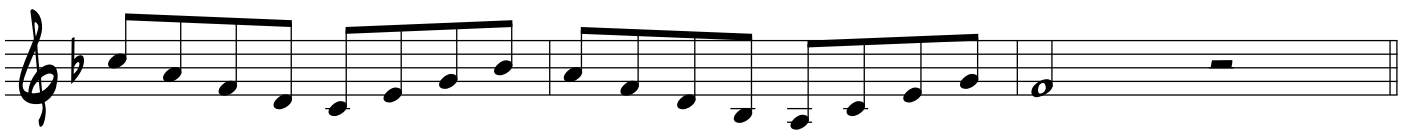
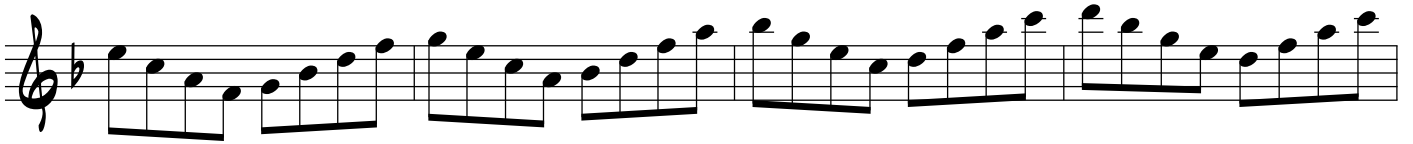
2

The second and third systems of the second system consist of three staves each. The top two staves show the ascending and descending scales in eighth notes. The bottom staff shows the scale in quarter notes.

Accordi Scala Maggiore



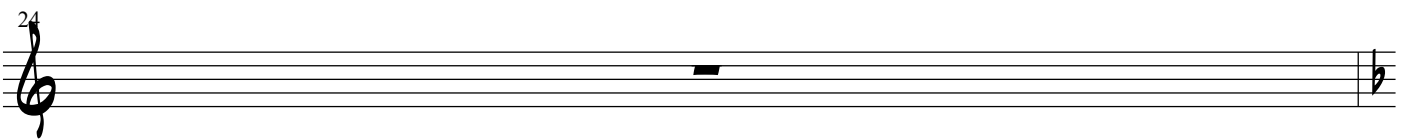
3



# Scala maggiore

Stefano D'Anna

1 - C



2 - F

Musical notation for the second exercise, '2 - F', in F major. It consists of seven staves of music. The first six staves contain a continuous scale of eighth notes, starting on F4 and ascending to F5. The seventh staff shows the final notes of the scale, ending with a double bar line and a key signature change to G major.

3 - G

Musical notation for the third exercise, '3 - G', in G major. It consists of two staves of music. The first staff contains a scale of eighth notes starting on G4 and ascending to G5. The second staff continues the scale, starting on G4 and ascending to G5, ending with a double bar line.

57

61

65

69